



Viewing by appointment only
Allen Goldstein - Bloomsbury
104 Cromer Street , London WC1H 8BZ
Tel: 020 7183 4101 Email: enquiries@allengoldstein.com Website: <https://www.allengoldstein.com>



ALLEN GOLDSTEIN

Two Bedroom, London Bridge SE1

Guide Price £450,000 Leasehold

Two Bedroom, Tower Bridge

Description

An attractive, centrally located 2 bed flat benefits from spacious living spaces, comprising naturally bright interiors.

Superbly located, the property comprises a bright reception with ample dining space, modern kitchen, two bright and airy double bedrooms and a modern bathroom.

A short walk to London Bridge Station, Druid Street boasts a fantastic location, offering a variety of transport links into the City. Local restaurants are within a moments reach, hosting local favourites, as well as general amenities.



Viewing by appointment only

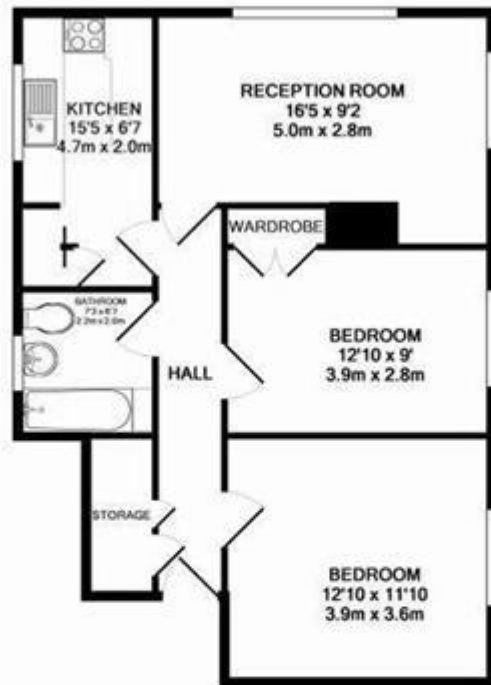
Allen Goldstein - Bloomsbury

104 Cromer Street, London WC1H 8BZ

Tel: 020 7183 4101 Email: enquiries@allengoldstein.com Website: <https://www.allengoldstein.com>



ALLEN GOLDSTEIN



TOTAL APPROX. FLOOR AREA 655 SQ.FT. (60.9 SQ.M.)

Whilst every attempt has been made to ensure the accuracy of the floor plan contained here, measurements of doors, windows, rooms and any other items are approximate and no responsibility is taken for any error, omission, or mis-statement. This plan is for illustrative purposes only and should be used as such by any prospective purchaser. The services, systems and appliances shown have not been tested and no guarantee as to their operability or efficiency can be given

Viewing by appointment only

Allen Goldstein - Bloomsbury

104 Cromer Street , London WC1H 8BZ

Tel: 020 7183 4101 Email: enquiries@allengoldstein.com Website: <https://www.allengoldstein.com>



ALLEN GOLDSTEIN



Viewing by appointment only
Allen Goldstein - Bloomsbury
104 Cromer Street , London WC1H 8BZ
Tel: 020 7183 4101 Email: enquiries@allengoldstein.com Website: <https://www.allengoldstein.com>